



Welcome to Chrysalis Care.

We're pleased you have made contact with us. We hope this booklet gives you a flavour of who we are and what we do, transforming lives



Our Vision



To transform the lives of children, young people, parent and children as well as young people on remand through the quality of care they will receive in our well supported families and through the provision of our comprehensive child centred team.

Mission

To ensure our foster carers and staff promote a stable and secure home, that safeguards children's welfare, promotes positive relationships, improves education and life chances in transforming the lives of the young people cared for by Chrysalis Care.



Aims and Objectives

Aims:

To be an acknowledged leader in quality and value, providing a unique, exceptional and outstanding fostering service for children and young people who are looked after.

Objectives:

- Our practice will always be child-centred and it will respond to the health, social and educational needs of all children and young people in our care.
- We will recruit competent foster carers who are well supported, trained and motivated.
- We will provide foster placements that offer safe, caring environments where children and young people can achieve their full potential.
- We will ensure that the views, wishes and feelings of our children and young people are considered and acted upon.



- We will provide consultation opportunities for foster carers, children and young people as well as Local Authorities to continually develop our fostering service.
- We will ensure that our staff and foster carers are knowledgeable and up to date regarding safeguarding, legislation and current research.
- We will ensure that good outcomes for children and young people in our care are at the centre of our practice and this will be monitored regularly.

The Company

Chrysalis Care is a family owned independent fostering provider founded in 1997, by Lynda and Louis Boden, and directed by daughters Alle Pflaumer (responsible person) and Sarah Boden- de Mel (decision maker).

Chrysalis Care aims to thoughtfully and sensitively bring together children who are 'looked after', with well-trained, well-supported and well-motivated foster carers.



Chrysalis Care is committed to offer personal attention to the daily concerns of foster carers and the children they look after, taking a child centred and responsive approach to the overall aim of 'transforming children's lives'.

Based in the London Borough of Bexley, Chrysalis Care work in partnership with London Boroughs and neighbouring counties

to offer safe, nurturing and caring home environments to children who are vulnerable, by means of a diverse team of foster carers. Our children's services department is core to our creative approach to providing high quality, outstanding foster care services. We offer play therapy, mentoring and befriending services, one to one and group support sessions, homework clubs, Young Person's Participation forum and regular social and leisure activities.

Chrysalis Care is a corporate member of the Fostering Network, the British Association for Adoption and Fostering and is also approved by London Care Councils.

Service Provided

Chrysalis Care offers a fostering service for children and young people aged 0-18 years of age, (and a "Staying Put" package for 18+), parent and child and remand placements, who are not able to live with their own families and whose assessed needs can be best met by being accommodated in a foster family setting. Chrysalis Care aims to provide a range of placements for children and young people, both short and long term.

Emergency Placements

Breakdowns in placements/ emergency situations can happen very suddenly. Chrysalis Care can ease these situations by providing family placements with foster carers who understand the trauma children experience in these unfortunate circumstances. 24 hours a day (Out of hours number is: 07930445820) (Office Number: 02082982800)

Medium term Placements

Medium term placements are provided in caring families where social workers, parents and the foster carers can contribute to well thought out care plans for a child or young person.

Long term Placements

In some circumstances it may be in the best interest of the child to become integrated into a foster family on a long-term basis. This arrangement can provide continuity and stability for the child or young person and provide a secure base. This long-term arrangement is usually consolidated via a permanency panel.

Short Breaks

Short breaks are provided for children living with parents, family members or in residential establishments such as boarding schools. We can offer regular short breaks to children with disabilities. These enable regular carers to benefit from a break.

Specialist Placements

Parents and Children – Chrysalis Care is able to provide two types of parent and child placements. A supported placement and an assessed placement (for more detailed service specification see our brochure).

Remand – we offer specialist carers who are able to provide a fostering remand



placement to young people in the criminal justice system.

Children with Disability – we offer fostering placements for children and young people who have various disabilities. We have specialist carers who are experienced and medically trained to look after children with severe disabilities.

Respite placements

Foster Carers within our resource who require short planned breaks due to the challenging nature of a placement will be able to use their approved back-up carers or other approved Chrysalis Care foster carers.

Supervised Contact

In some situations, an experienced supervisor is required to enable contact between parent and child to take place. Chrysalis Care can provide this service.

Staying Put

It is important to Chrysalis Care that young people have the opportunity to leave their fostering family when they are ready, not just when they turn 18. Therefore we offer a 'Staying Put' service that enables the young person to have the choice to stay with their foster carers past the age of 18.

We have a dedicated multi-professional Children's Services Team whose sole purpose is to ensure children and young people's psychological, emotional, educational and health needs are met.



Children's Services

Children's Services

As part of our comprehensive package Chrysalis Care's Children's Services Team offers:



1) Play Therapy / Counselling and Life Story Work

2) Education support service and liaison

3) Health/ safeguarding information / training

4) Leisure information / activities

5) Leaving care training & support



6) Chrysalis Care fully supports the young people's participation, feelings and views. They ensure a variety of consultation opportunities in order to listen to children, through support groups, questionnaires, newsletters, consultation forms, forums etc.



7) Co-ordinate social events; bringing children, young people, fostering families and staff together.

8) Help build children's self esteem

via 1-1 support, Play Therapy, Counselling, Life Story Work, recognition certificates, visits to children, social events, support groups/ forums, additional tuition, preparation for independence and much more.

9) Support carers in caring for children by offering many services, mentoring, training on attachment/ listening/ playing with children, supporting with challenging behaviour, behaviour management programmes and child friendly care plans, providing health passports/ information and much more.

10) Arranging and undertaking assessments. Children's Services work with children and young people at their pace and in a person centred way. An initial assessment helps to identify the specific needs to be addressed.



11) ASDAN accredited trainers. We have approved ASDAN facilitators who can offer a variety of courses to young people, to gain credits towards certificated and recognised qualifications.

In addition to these services Chrysalis Care provides:

12) Regular newsletters. Including articles written by young people sharing their success stories.

13) 'Who cares' Magazines. We provide magazines produced by 'Who Cares Trust' for children and young people.

14) Children's Savings. We ensure that a minimum of £10 per week for each child or young person placed is saved for them during their time with Chrysalis Care.

15) Awards Ceremony. Recognising achievements is a core value of Chrysalis Care. Successes and achievements are recognised and

rewarded for nominated children and young people at our Annual Award ceremony.

16) Children and young people's guide. We have produced two guides; one for young children aged 5-10 years and another for young people aged 11-18 years. These provide age appropriate information about Chrysalis Care and whom they can contact should they have any concerns



IN THIS TOGETHER!



Support to Foster Carers

Chrysalis Care prides themselves on going the extra mile to support foster carers by means of:

- **Providing a qualified supervising social worker:** The Supervising Social Worker gives support to a manageable caseload of foster carers, offering support, advice and advocacy via monthly visits to foster carer's homes, unannounced visits, annual reviews and other meetings.
- **Providing out of hours support:** We have qualified social workers who are available by phone 24 hours a day, 7 days a week to offer advice and support, as well as make emergency placements for local authorities.
- **Financial allowances:** Foster carers receive an allowance which covers a reward element for their work and expenses for the child or young person and other household expenses. This is paid directly into the foster carer's account every 28 days.

- **Foster Carers' Handbook:** All foster carers receive a handbook containing up to date and relevant information regarding Chrysalis Care's expectations and regulation, as well as reference to a complete set of policies which are stored on the database.



- **Social events/ lunches:** Children's Services organise a variety of events for children and young people, as well as foster carers and staff. This includes trips to the park and beach, activity centres, trips to castles, Christmas or New Year celebrations and much more.

- **Annual Awards Ceremony:** This celebration publically acknowledges and rewards longevity of service to Chrysalis Care, celebrating 5, 10, 12, 15+ years of transforming the lives of children and young people. It also highlights children and young people's achievements gained throughout the year.

- **Respite:** Where it is agreed that in the best interest of the child or young person, respite is required, Chrysalis Care pay the foster carer up to 14 days per year during the respite period.

- **Provide Support groups and learning:** We have a number of support groups held in geographical areas in and around London and Kent. Some are held during the day and others in the evening, allowing as many foster carers as possible to attend. These groups offer mutual support, sharing good practice and communicating with staff.

Learning and Development

- Chrysalis Care provides a comprehensive learning and development programme, which is based on the government standards for foster care. These include group foster care training as well as specialist training and recommendations from Annual Reviews.
- Specialist trainers are sourced, bringing expert knowledge in their field. Feedback from foster carers is useful insight to ensure high quality and interesting training is constantly provided.
- We make our training programme as accessible as possible by putting on courses in local geographical areas as well as providing online training.



Training, Support and Development Standards

- Chrysalis Care supports foster carers to achieve evidence of learning through TSD portfolios, which are required to be completed within the first 12 months of fostering.
- Workshops are regularly provided to encourage foster carers to work together on portfolios alongside the support from social work staff.

- Supervising social workers will also discuss and support foster carers in the completion of these during supervisory visits.

Holiday Homes



Family time is very important. To help people to enjoy time together, we have 3 holiday homes available to our foster carers and their families. We have two 6-berth caravans at the Foxhunter Park, located near to Ramsgate, Kent and an apartment in Puerto De Santiago, Tenerife, which can be hired at greatly subsidised rates.

COULD YOU FOSTER?

Recruitment and Assessment of Foster Carers

Chrysalis Care is committed to recruiting a diverse range of foster carers to meet the various needs of the young people and children placed with us.

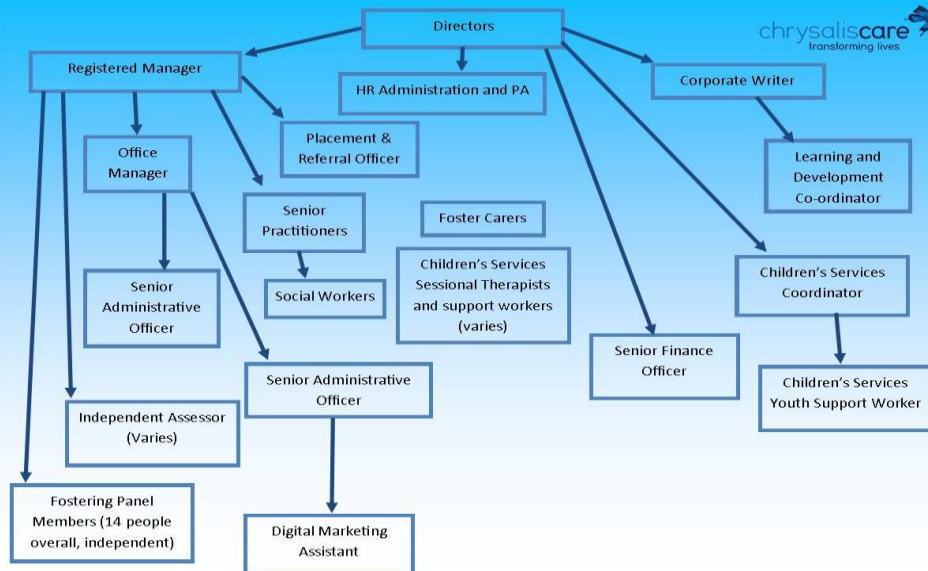
1. Initial home visit: This provides opportunity for questions to be answered, find out more information about Chrysalis Care and ascertain suitability to foster.
2. Application form: Applicants complete a form detailing information such as household members and their previous experiences.
3. Statutory checks and references: These are a number of checks that are carried out including-
 - Enhanced DBS check; which would disclose any criminal convictions.
 - Medical assessment
 - Local Authority
 - 2-3 references personal/ex-partner
 - Employer's reference
 - Identity checks
4. Skills to Foster Training:

A photograph of a form, likely a foster care application form, showing various sections and checkboxes. The form is white with purple and yellow highlights. It contains several sections with headings like 'Personal Details', 'Employment', 'References', and 'Health'. There are many checkboxes and some text fields. The form is slightly angled and shows some shadows.

Applicants are then invited to a 3 day pre-approval course. This training will enhance understanding of the fostering role and the impact of loss and trauma upon children's lives.

5. Assessment: An independent qualified social worker carries out an assessment of applicants visiting them between 6-9 times in their own homes. This assessment demonstrates that applicants have the core competencies to undertake the role of foster carer.

6. Panel: The completed and signed report is then presented to our fostering panel. Applicants are invited to panel alongside their assessor, where they will hear the recommendation of their suitability to foster.



If you believe you could foster for Chrysalis Care and help transform lives then please don't hesitate to give us a call, email or fill in the application form and send it to us. We look forward to working with you soon!

Chrysalis Care

Kings House

7 Princes Street

Bexleyheath

DA7 4BQ

020 8298 2800

info@chrysaliscare.org 

Tel: 0208 298 2800

Fax: 0208 304 3042

Website: www.chrysaliscarefostering.org
www.twitter.com/ChrysalisCare
www.facebook.com/ChrysalisCareFostering/

All rights reserved. No part of this publication may be reproduced, stored on a retrieval system, or transmitted in any form or by any means without prior permission of Chrysalis Care.

Copyright © Chrysalis Care Ltd 2003

